



Sioux Lookout
First Nations
Health Authority

CORONAVIRUS COVID-19

FREQUENTLY ASKED QUESTIONS

Case and Contact Management

August 19, 2020

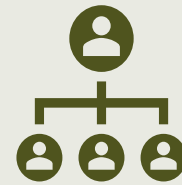
What is case management?



A 'case' is the term we use for someone who is ill with COVID-19. Case management means making sure that they get proper care and do not spread it to anyone else.

What is contact tracing?

Contact tracing means finding people who may have been exposed to someone with COVID-19.



It is very important to find the contacts as soon as possible. They have to self-isolate and keep their distance from other people. They need information on how to contain the virus, so others do not get sick. Contact tracing protects the rest of the community, especially the vulnerable community members.



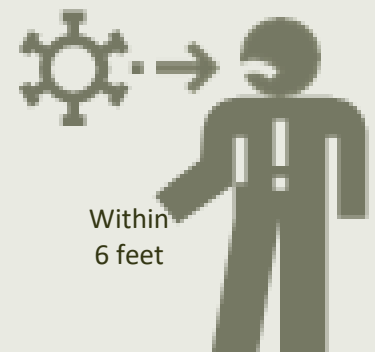
How do health officials identify contacts?

We talk to the person who has COVID-19 (the case). We ask who they came in contact with, where they went and what they were doing while they were infectious. We cover the 48 hours before the symptoms started or before they tested positive. Contact tracing continues for 14 days.

Household contacts include anyone who stayed in the same home while the case was not self-isolating.

Non-household close contacts are people who:

- had contact with the case for more than 15 minutes and were within 2 metres (6 feet) or
- visited them at their home, or
- travelled in a small airplane with them.



We also look at the level of risk of the contact. For example, proper mask wearing and handwashing lower the risk for non-household contacts.

People who just pass by on the street or are briefly in the same room are low or no risk. We do not follow up with them for contact tracing.