

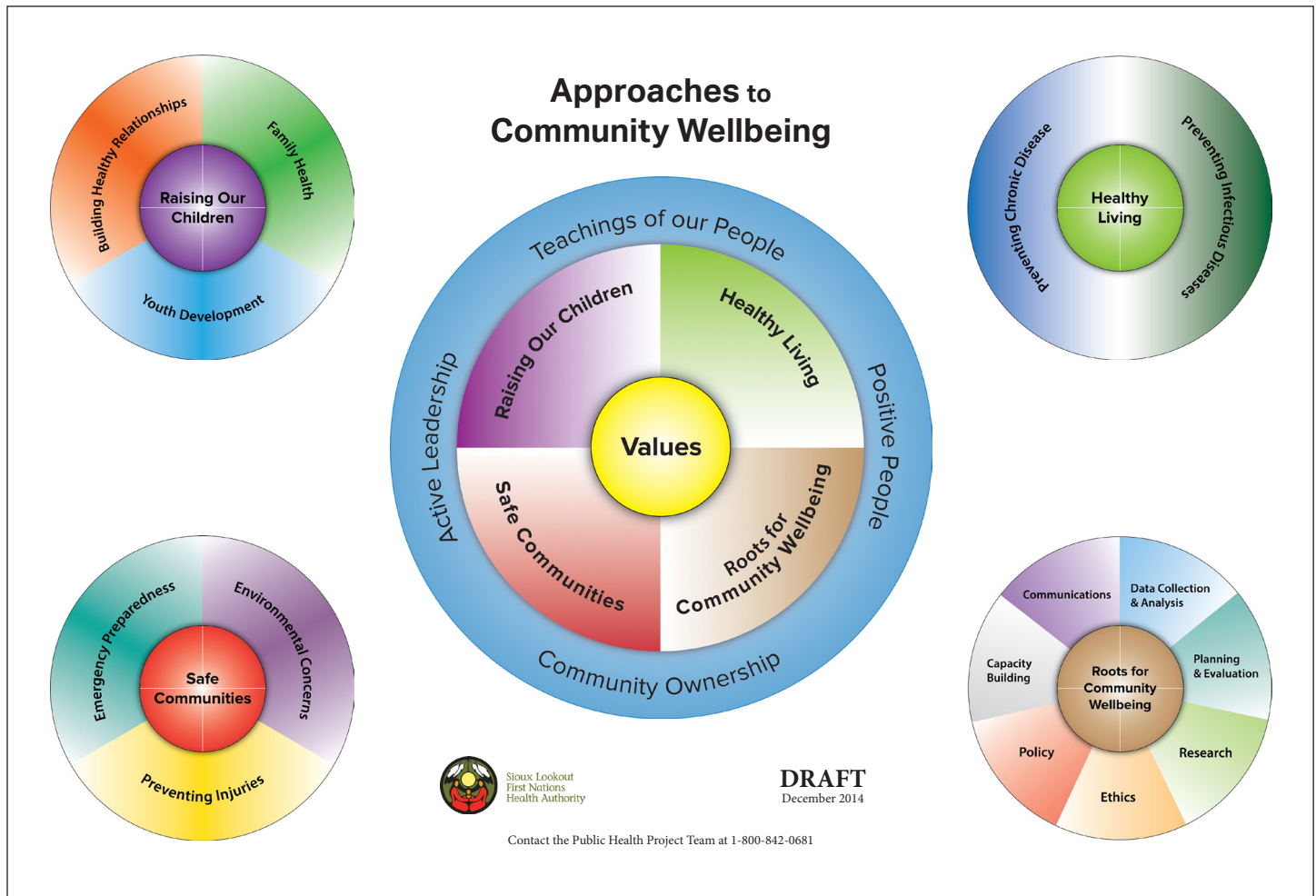
Public Health Update

Winter 2015

www.slnha.com



Sioux Lookout
First Nations
Health Authority



Model Moves to Conceptual Stage

The Public Health Project team has developed a conceptual model for the Public Health System. The first thing we did was change the name from Public Health System to Approaches to Community Wellbeing, since it is easier to understand and translate! From now on, the Public Health Project team will be using the language "Community Wellbeing" instead. We also developed a vision, values, goals, and visual representation of the model (see above).

This model, along with roles of Tribal Councils, SLFNHA, and communities has been presented back to Health Directors through video conferences and teleconferences. In total, we conducted eight video conferences, two teleconferences, and one in-person presentation and we reached representatives from 26 communities and 5 tribal councils. For those who were unable to be reached, we sent them a copy of the PowerPoint presentation.

continued on next page

continued from previous page

Throughout this process, the feedback on the model was overwhelmingly positive. Participants said that the model was really good, straightforward, thorough, and used accessible language. They felt that the values and program areas were inclusive, and agreed that it was a good idea to take a wholistic approach instead of singling out mental health from other aspects of health. Participants appreciated the level of community consultation that we did in the development and revisions of the model. The participants also had suggestions for improvements into the model, which are reflected in the model diagram.

In January, the Public Health Project Team met with Health Directors from Tribal Councils to expand on their roles in the Approaches to Community Wellbeing. It was also an opportunity to clarify the roles of Tribal Councils and SLFNHA. The Project Team is currently working with an Associate Medical Officer of Health consultant and travelled back to two of the five communities with him to develop the model further. We also hosted a Public Health Working Group meeting in Thunder Bay in January to take the feedback from the Tribal Councils Meeting and community visits to refine the model. In February, we will be hosting a Chiefs' Meeting to present the final model. We have invited all Chiefs and Health Directors to attend.

Vision

The Anishinabe people of this land are on a journey to good health by practicing healthy lifestyles rooted in our cultural knowledge.

Values

- The Teachings of our people
- Family
- Language
- History
- Wholistic
- Honour Choices and Accept Differences
- Share Knowledge
- Connection to the Land
- Supportive Relationships and Collaboration

Goals

- Improved approaches to community wellbeing, which are integrated, wholistic, sustainable, and proactive
- Increased community ownership over our health and approaches to wellbeing
- Increased number of people leading the way who are committed to healthy communities
- Safer communities
- Increased number of people making healthy choices
- Increased number of children raised as healthy community members
- Increased connection to the teachings of our people

For more information about the Public Health Project contact:

Emily Paterson, Public Health Project Coordinator | Phone: 807-737-1802 | Toll-free: 1-800-842-0681